



# INSTITUTE

for ADVANCED STUDY

Approved non-Wireless  
Time Capsule Installation Procedure  
by Brian Epstein  
Network and Security Officer  
v1.1 - Friday, September 5, 2014

---

## Approved non-Wireless Time Capsule Installation Procedure

These steps are the recommended method for configuring an Apple Time Capsule for inclusion on the untrusted (Resnet/Wireless/Untrusted Campus) network here at the Institute for Advanced Study. This procedure disables the wireless antenna in order to ensure it does not cause interference.

1. Read the "AirPort ID" off of the bottom of the Time Capsule. Do not Register this ID with UpdateMe. Instead, email this ID to [network@ias.edu](mailto:network@ias.edu). Let us know where the Time Capsule will be installed and who will be using it.
2. Read the "Ethernet ID" off of the bottom of the Time Capsule. Register this ID at <https://updateme.ias.edu> (Network Device Registration Tab) from another computer or laptop that is already on the Institute Network.
3. Install the Macintosh or Windows Time Capsule Software.
  - Insert CD
  - Double Click Time Capsule
  - Follow the Guided Tour
  - Accept License Agreement
  - Install to Disk
  - Upgrade
  - Enter Password to install software
  - Eject CD
4. Make sure to backup any data currently on your time capsule. This is a precaution only.
5. Set your Time Capsule to factory default settings. You can do this by pressing on the reset button while the device is plugged in. Make sure no other cable is plugged in at this time. The front light will begin flashing rapidly once the device has been reset.
6. Disable the wireless on your Macintosh.
7. Connect your Macintosh's Ethernet cable to the LAN port <...>.
8. Plug in the Time Machine power cord.



# INSTITUTE

for ADVANCED STUDY

Approved non-Wireless  
Time Capsule Installation Procedure  
by Brian Epstein  
Network and Security Officer  
v1.1 - Friday, September 5, 2014

9. You should automatically get the IP address 10.0.1.200 on your Ethernet connection. You can verify connectivity with Time Capsule by pinging 10.0.1.1.
10. The AirPort Utility - Time Capsule screen should automatically pop up after a little while. If it does not, please launch the application and discover your Time Capsule.
11. Enter your Time Capsule's name and the password. Make certain to choose a good password. This device will be accessible from our untrusted network and could be compromised if a weak password is chosen. Click Continue

A screenshot of the "AirPort Utility - Time Capsule 87a2af" window. The window has a title bar with standard Mac OS X window controls. On the left is a sidebar with a blue header containing a yellow status icon and a text field labeled "Time Capsule 87a2af". The main content area is light gray and contains the following text: "Time Capsule can back up your Mac OS X Leopard computers using Time Machine, and share your Internet connection and USB devices with computers on your network." Below this is a text field for "Time Capsule Name:" with the value "Brian Epstein's Time Capsule". Then, a prompt "Enter a password to protect the settings of this Time Capsule." is followed by two text fields for "Time Capsule Password:" and "Verify Password:". Below these are two checkboxes: the first is checked and labeled "Remember this password in my keychain", and the second is unchecked and labeled "Use a different password to secure disks". At the bottom of the main area is the text "Click Continue to proceed." At the very bottom of the window are three buttons: "More Info...", "Go Back", and "Continue".



# INSTITUTE *for* ADVANCED STUDY

Approved non-Wireless  
Time Capsule Installation Procedure  
by Brian Epstein  
Network and Security Officer  
v1.1 - Friday, September 5, 2014

12. Choose "I want to connect Time Capsule to my computer or network using Ethernet."

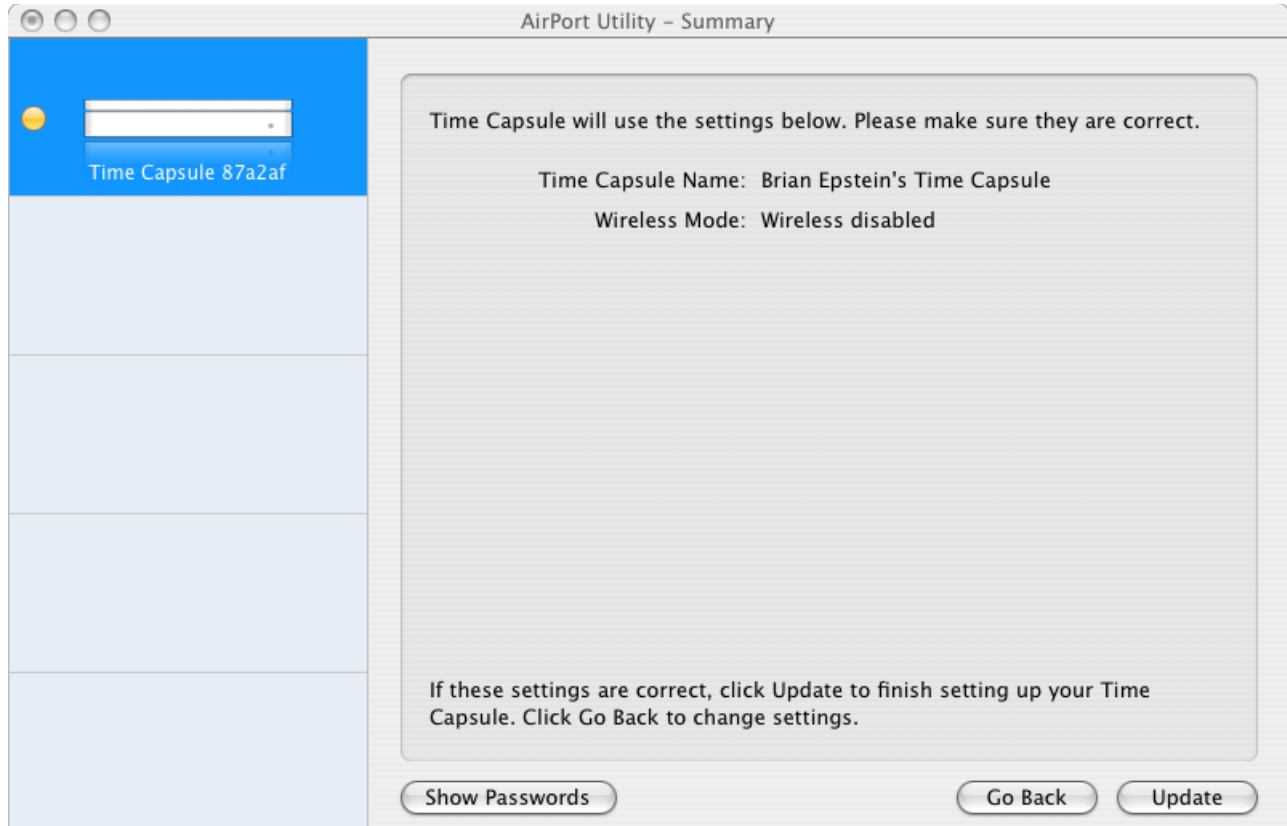
A screenshot of the "AirPort Utility - Network Setup" window. The window has a title bar with standard macOS window controls. On the left is a sidebar with a blue header containing a yellow status icon and a text field labeled "Time Capsule 87a2af". Below the header are four light blue rectangular buttons. The main content area on the right has a light gray background and contains the following text: "AirPort Utility hasn't discovered any existing wireless networks. Do you already have a wireless network?". Below this text are three radio button options: "I have a wireless network and want to add Time Capsule or replace an existing device on my network", "I don't have a wireless network and I want to create one", and "I want to connect Time Capsule to my computer or network using Ethernet". The third option is selected with a filled radio button. At the bottom of the main area is the text "Click Continue to proceed.". At the bottom right of the window are two buttons: "Go Back" and "Continue".



# INSTITUTE *for* ADVANCED STUDY

Approved non-Wireless  
Time Capsule Installation Procedure  
by Brian Epstein  
Network and Security Officer  
v1.1 - Friday, September 5, 2014

- 
13. Choose Update after you see the settings that the Time Capsule will have. It should show the name of your Time Capsule and that you wish to disable the wireless.



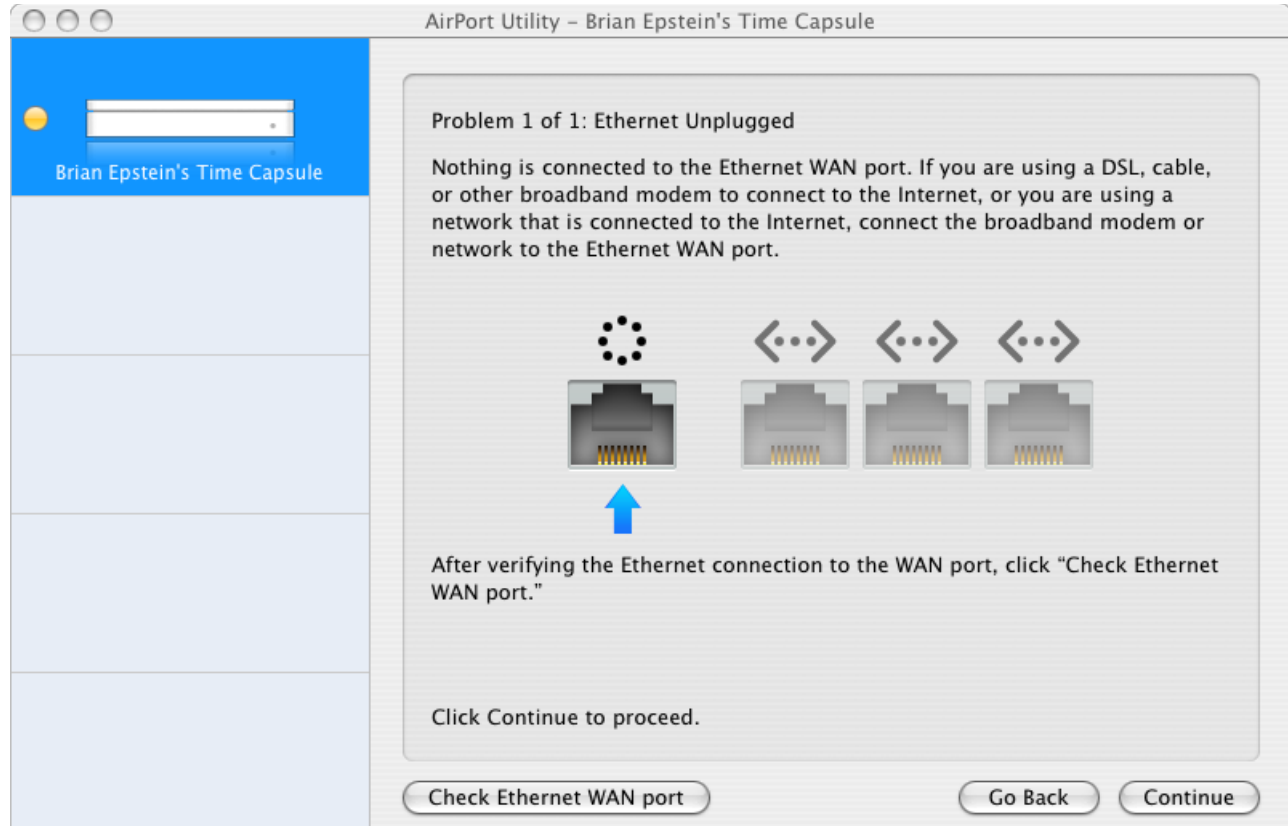
14. The Time Capsule will automatically be restarted.



# INSTITUTE *for* ADVANCED STUDY

Approved non-Wireless  
Time Capsule Installation Procedure  
by Brian Epstein  
Network and Security Officer  
v1.1 - Friday, September 5, 2014

15. The AirPort Utility will complain that the “Ethernet [is] Unplugged.” At this time, plug in the Ethernet from the apartment wall jack to the WAN port. Click “Check Ethernet WAN port.”

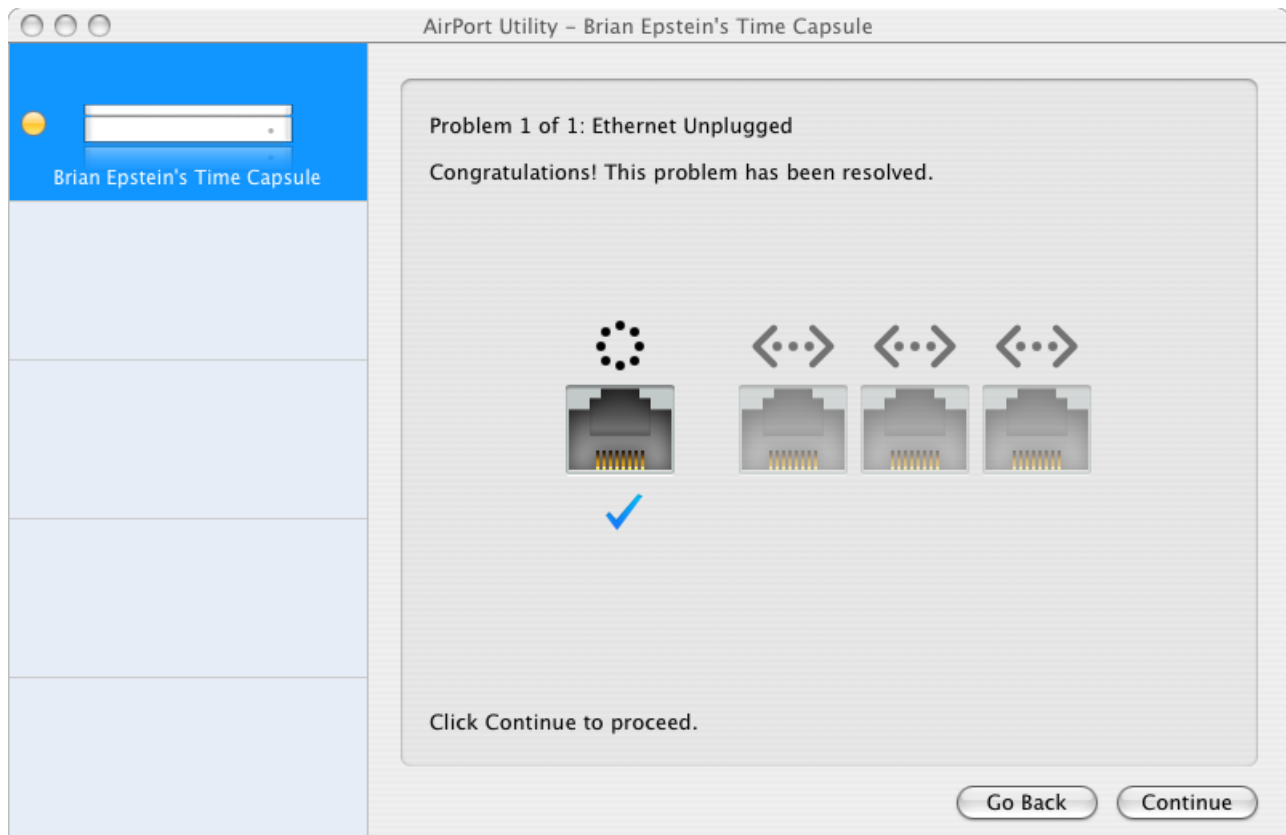




# INSTITUTE for ADVANCED STUDY

Approved non-Wireless  
Time Capsule Installation Procedure  
by Brian Epstein  
Network and Security Officer  
v1.1 - Friday, September 5, 2014

16. You should now see notice that this problem has been resolved. Click Continue.



17. You can now quit the AirPort Utility

18. Restart the AirPort Utility and you may get a pop up warning you of a new version of AirPort Utility that is available. Install the Update



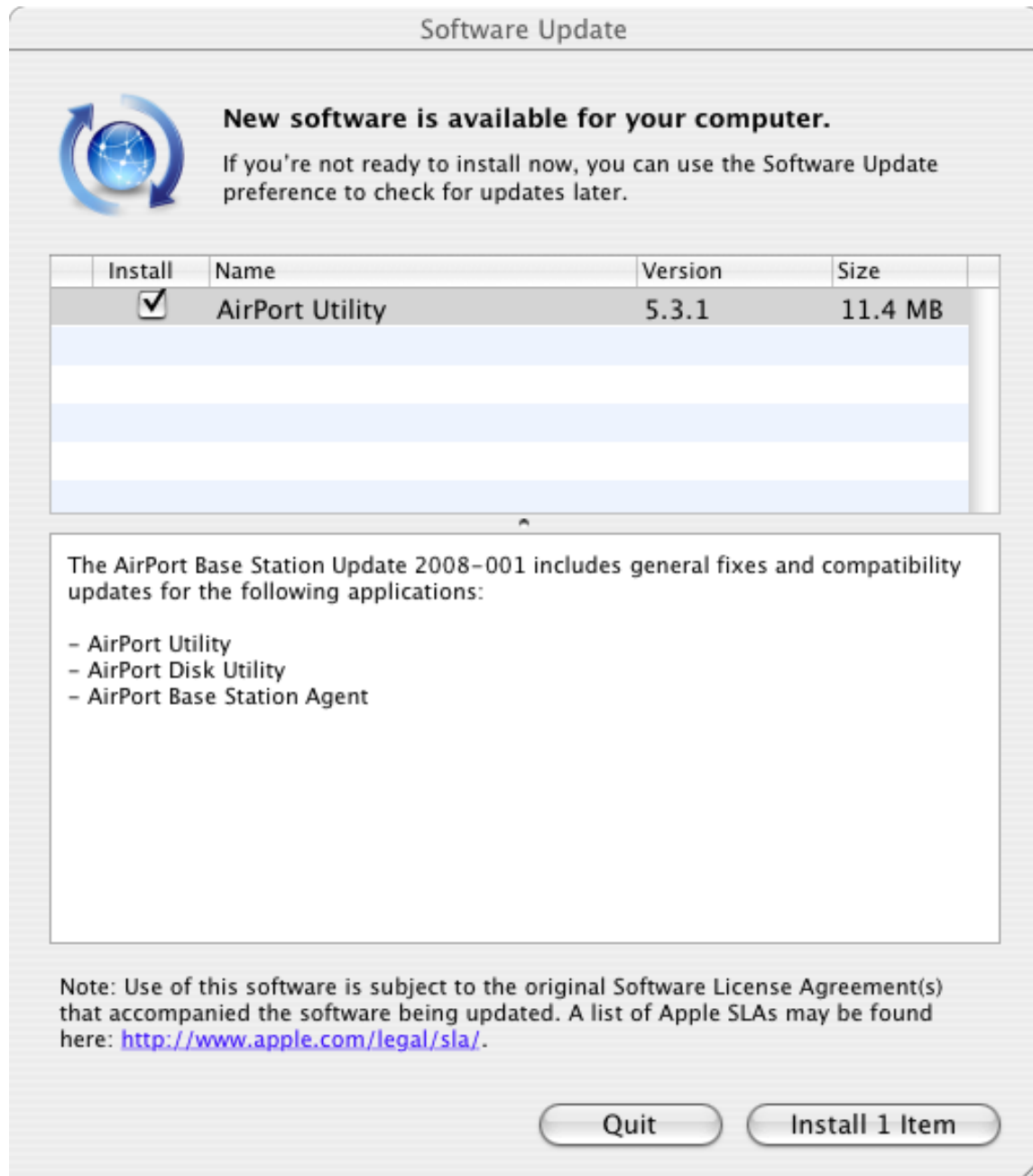


# INSTITUTE

for ADVANCED STUDY

Approved non-Wireless  
Time Capsule Installation Procedure  
by Brian Epstein  
Network and Security Officer  
v1.1 - Friday, September 5, 2014

19. When the Software Update Window pops up, click on "Install 1 Item." You will have to enter your password to install the update.

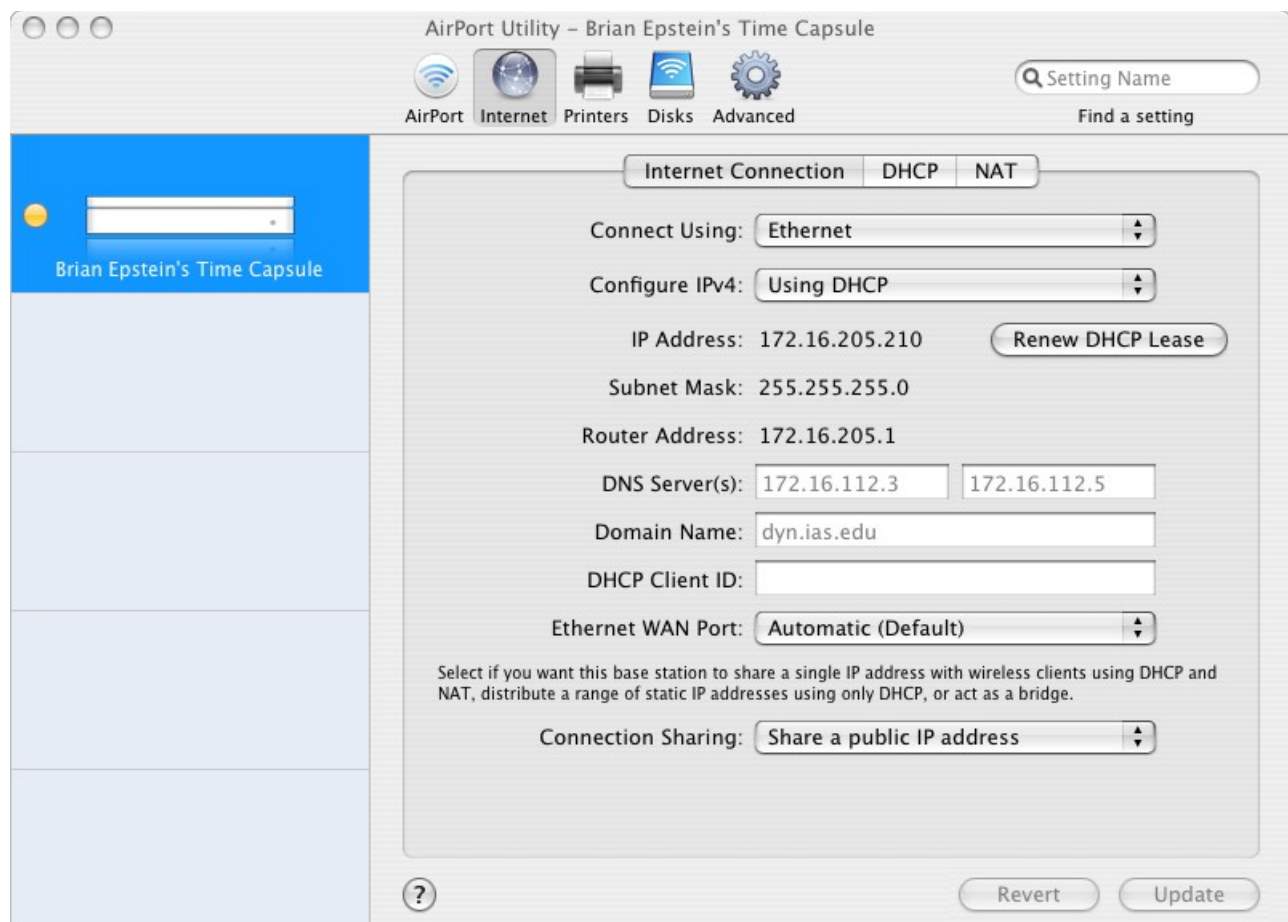




# INSTITUTE *for* ADVANCED STUDY

Approved non-Wireless  
Time Capsule Installation Procedure  
by Brian Epstein  
Network and Security Officer  
v1.1 - Friday, September 5, 2014

20. Quit Software Update when it is finished.
21. Start the AirPort Utility again. If you updated the version, you may need to allow it access to your password key chain
22. Click on the Internet Settings button in the airport Utility.



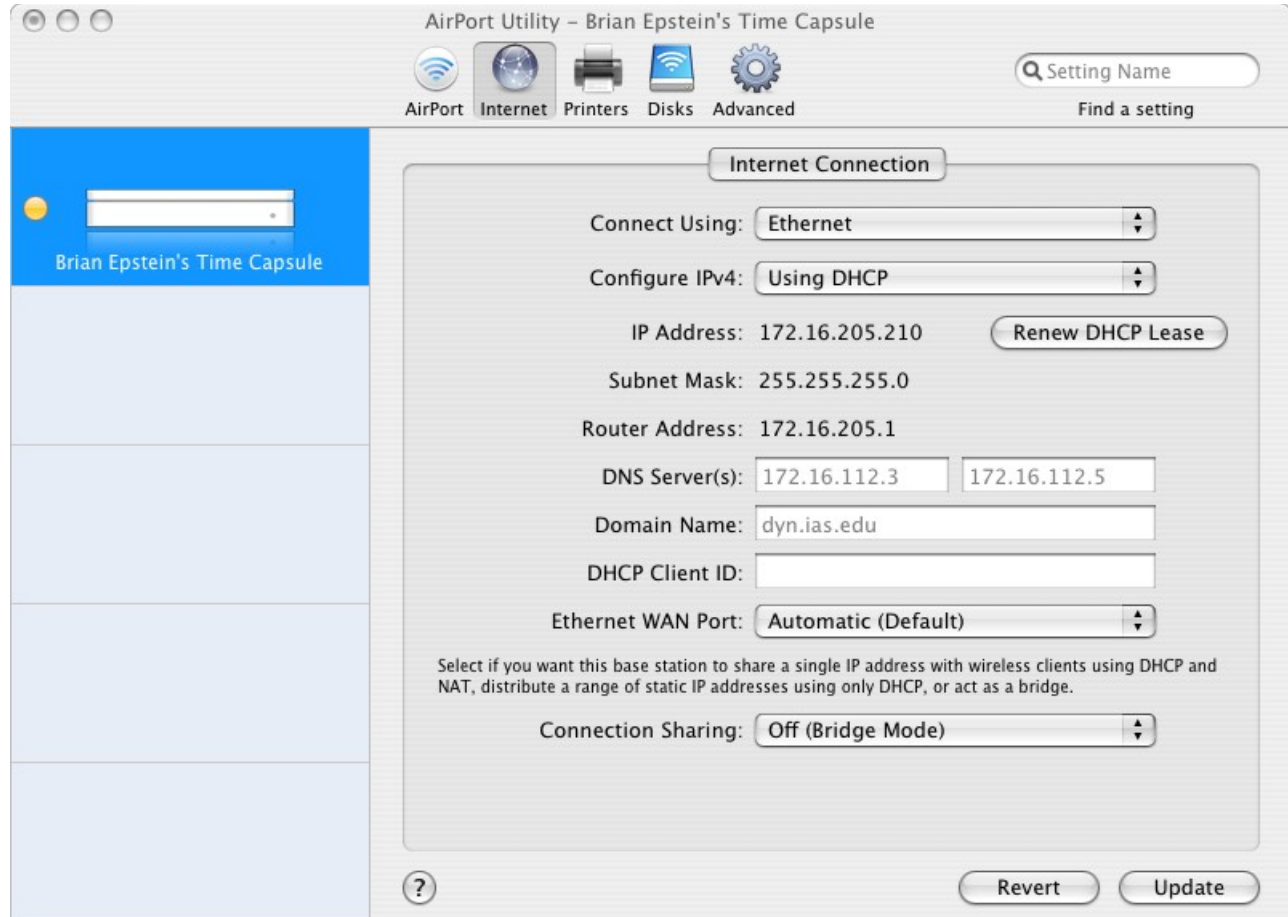




# INSTITUTE *for* ADVANCED STUDY

Approved non-Wireless  
Time Capsule Installation Procedure  
by Brian Epstein  
Network and Security Officer  
v1.1 - Friday, September 5, 2014

23. At the bottom, change the “Connection Sharing:” Setting to “Off (Bridge Mode).” Click on Update to save the changes.



24. This will cause the Time Capsule to reboot.

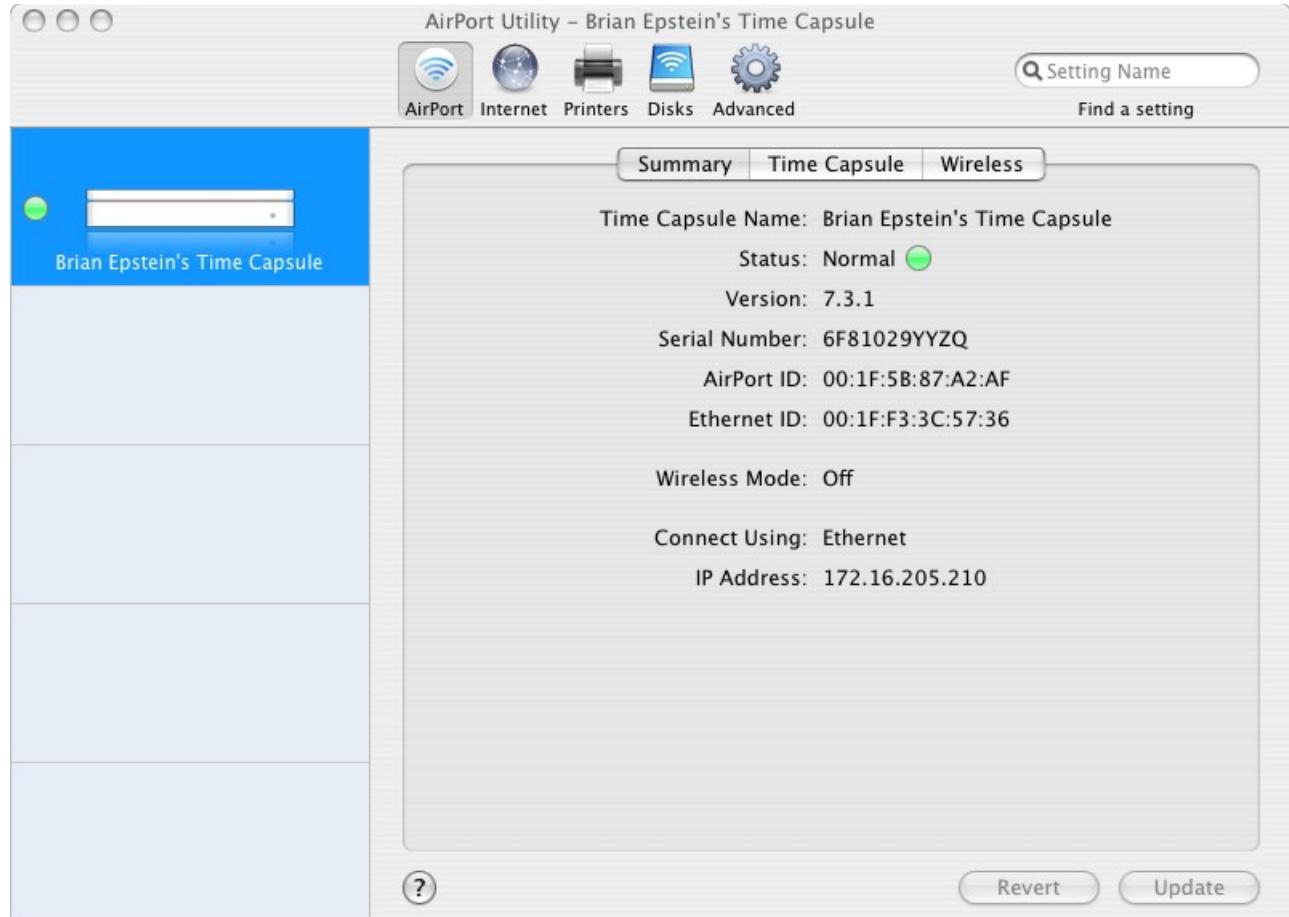


# INSTITUTE

for ADVANCED STUDY

Approved non-Wireless  
Time Capsule Installation Procedure  
by Brian Epstein  
Network and Security Officer  
v1.1 - Friday, September 5, 2014

25. After rebooting, your Time Capsule should show a green light on the front. Please write down the "IP Address" show on the screen.



26. You can now quit the AirPort Utility.

27. Now, we need to connect to the Time Capsule for the first time and do the initial backup.



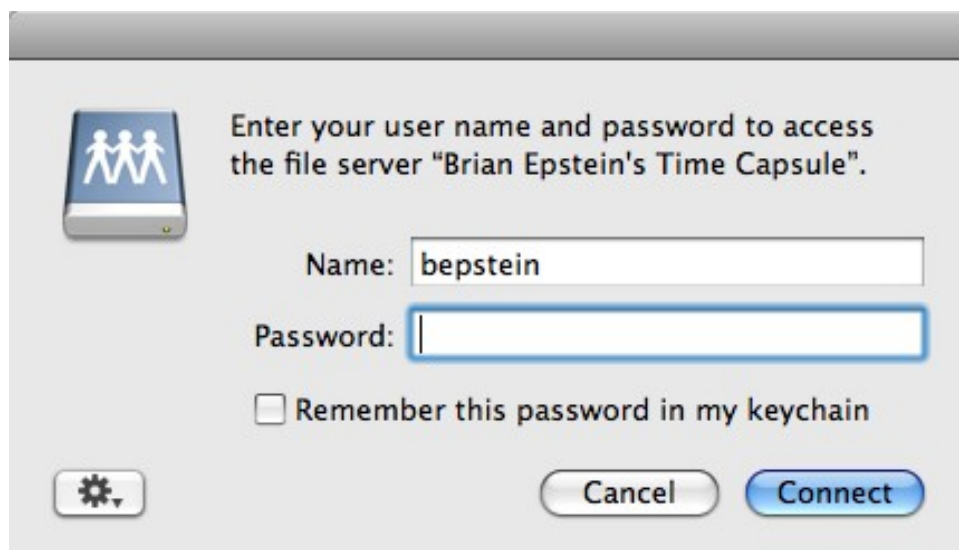
# INSTITUTE *for* ADVANCED STUDY

Approved non-Wireless  
Time Capsule Installation Procedure  
by Brian Epstein  
Network and Security Officer  
v1.1 - Friday, September 5, 2014

28. In Finder, navigate to the Go->Connect to Server window. Enter in the IP address from step 25 in the Server Address field and click on Connect.



29. Enter your password from step 11.



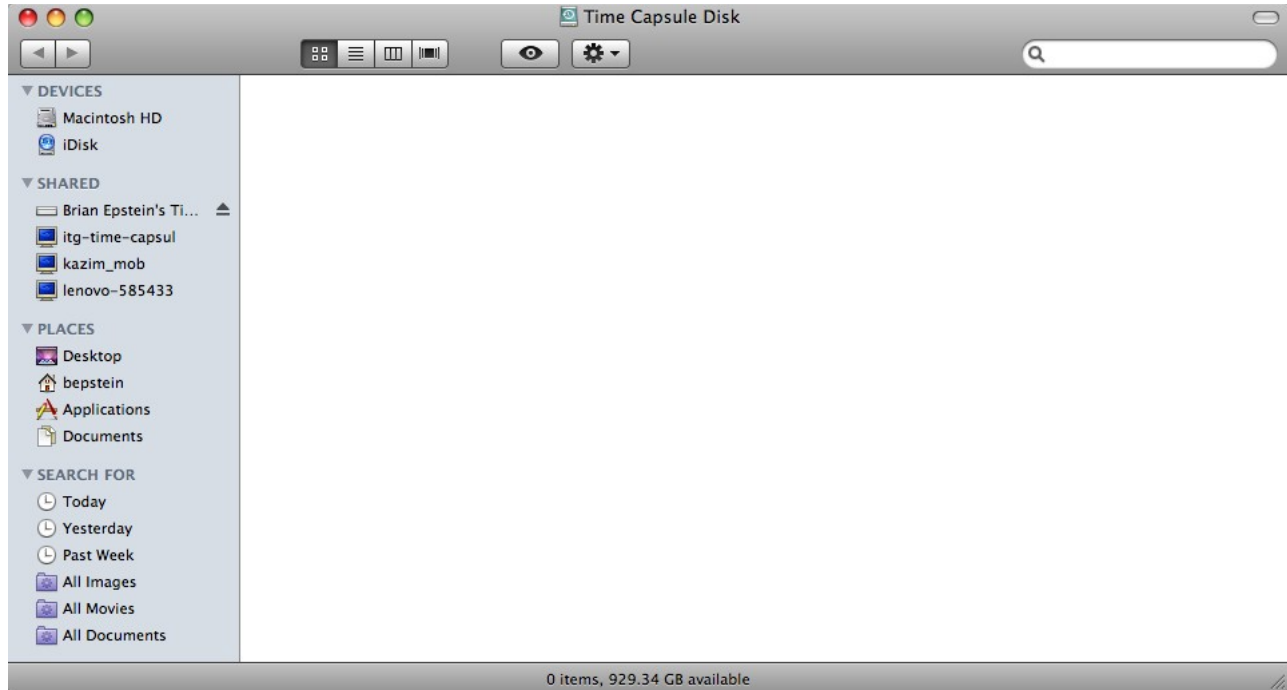


# INSTITUTE

*for* ADVANCED STUDY

Approved non-Wireless  
Time Capsule Installation Procedure  
by Brian Epstein  
Network and Security Officer  
v1.1 - Friday, September 5, 2014

- 
30. You should now have the disk connected and see something like this. If you had data on the Time Capsule before, you should be able to access it here.



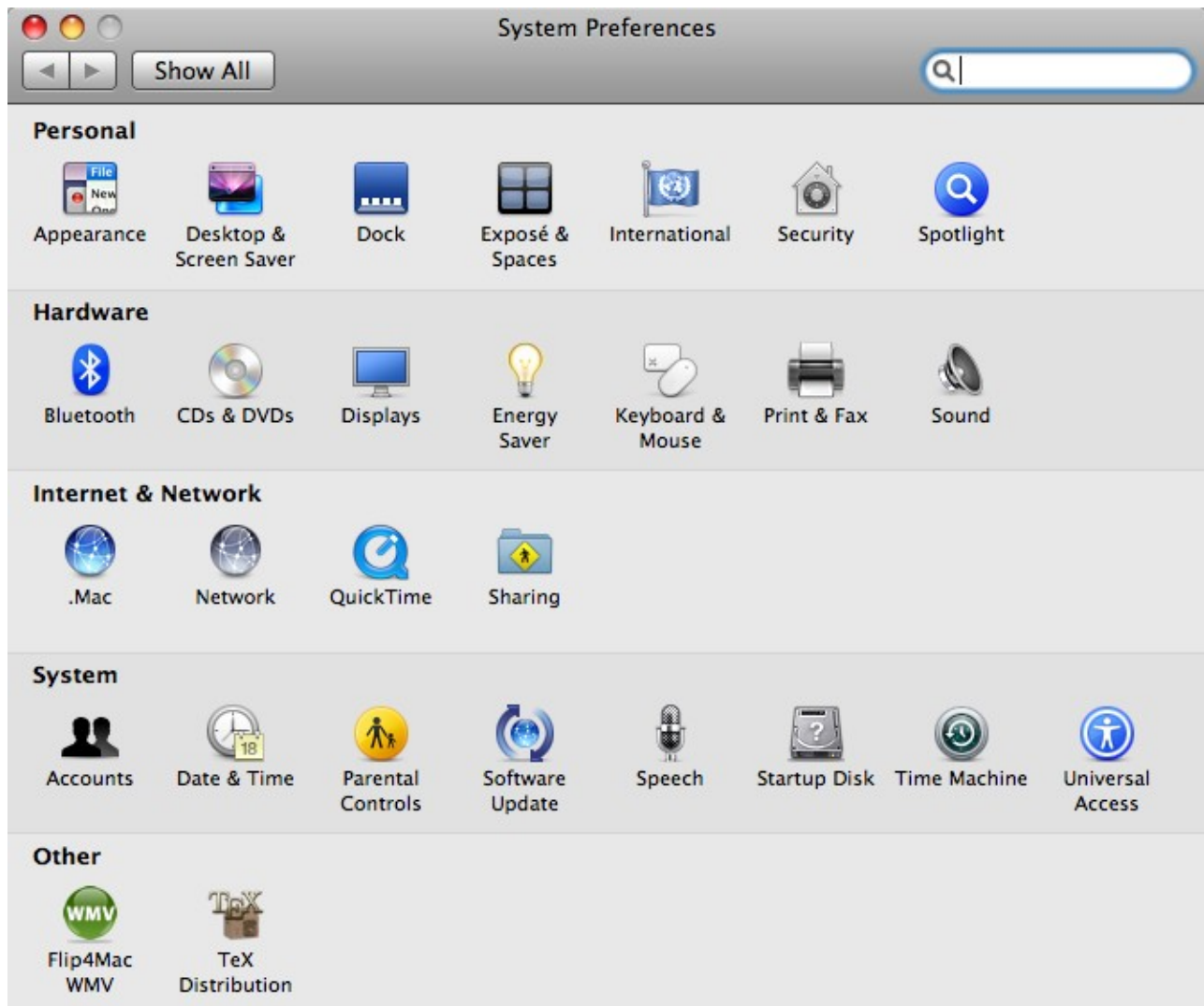


# INSTITUTE

for ADVANCED STUDY

Approved non-Wireless  
Time Capsule Installation Procedure  
by Brian Epstein  
Network and Security Officer  
v1.1 - Friday, September 5, 2014

31. To connect to Time Machine, open your system preferences and choose “Time Machine.”





# INSTITUTE

for ADVANCED STUDY

Approved non-Wireless  
Time Capsule Installation Procedure  
by Brian Epstein  
Network and Security Officer  
v1.1 - Friday, September 5, 2014

32. Double Click on Time Machine.

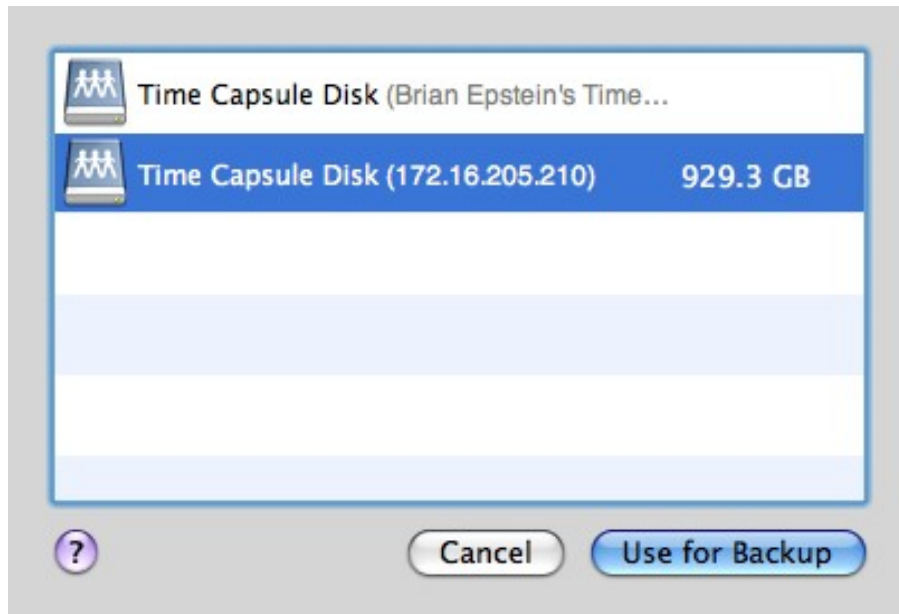




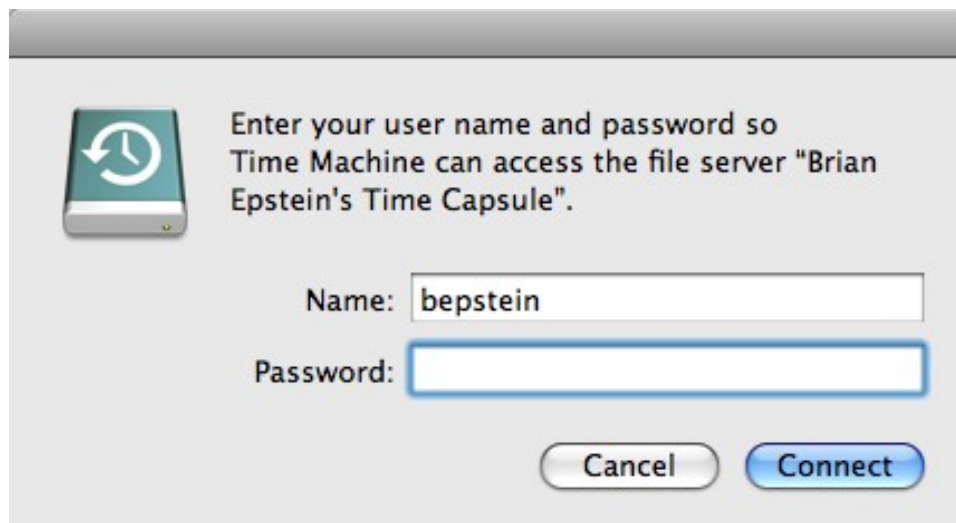
# INSTITUTE for ADVANCED STUDY

Approved non-Wireless  
Time Capsule Installation Procedure  
by Brian Epstein  
Network and Security Officer  
v1.1 - Friday, September 5, 2014

33. Click on Choose Backup Disk button.



34. Enter your password to connect.







# INSTITUTE for ADVANCED STUDY

Approved non-Wireless  
Time Capsule Installation Procedure  
by Brian Epstein  
Network and Security Officer  
v1.1 - Friday, September 5, 2014

35. Your time machine should now show that the “ON” button is on and that it will begin to backup in a minute or two.



36. At this point, you should still be using the direct Ethernet link to backup. It will be significantly faster than wireless for the initial backup.
37. The initial backup may take a long time. There are reports of large hard drives taking upwards of a week for the initial backup. Although this is a rare case, be prepared for the backup to take a while. It is suggested to begin the backup before going to bed so that it may be finished in the morning.
38. After these steps have been finished, and the initial backup completed, you may unplug your computer from the Time Capsule.





**INSTITUTE**  
*for* ADVANCED STUDY

Approved non-Wireless  
Time Capsule Installation Procedure  
by Brian Epstein  
Network and Security Officer  
v1.1 - Friday, September 5, 2014

- 
39. Re-enable your wireless connection in your computer.
  40. Ensure that you are able to reconnect to the Time Capsule and that incremental backups are working.
  41. Your Time Capsule is now connected to our IAS network and its wireless radio is turned off. Any computers plugged into the Time Capsule will access the network over a bridged connection. This means that they will act as if they were directly connected to the network. The Time Capsule DHCP server is off and has no chance of interrupting service. This configuration follows our wireless policy.
  42. When leaving the Institute, reset the Time Capsule back to factory defaults again using the procedure in step 5. You will then have to setup the device appropriately for your new location.
  43. For any questions or problems, please contact your school's help desk or Network Administration at x4500, or at [network@ias.edu](mailto:network@ias.edu).

Network Administration appreciates your help in configuring your device to integrate into our network. By setting the device up in this fashion, you eliminate possible interference in our wireless network. This allows everyone to utilize the wireless network reliably. Thank you.