

How to install OpenVPN on Windows

*Note that DUO Authentication must be set up prior to the start of this process

1) Open your preferred web-browser and search for openvpn.ias.edu

2) Enter your IAS Credentials and click **Sign In**



Institute for Advanced Study

User Login

Form for User Login:

- Username field (with a red underline)
- Password field (with a red underline)
- Sign In button (circled in red)

3) Open your Duo app and select **Show Password**

4) Enter the single-use Duo password and click **Continue**



 **OPENVPN**
Access Server

Institute for Advanced Study

Enter Duo passcode or "push":

Continue

Cancel

5) Select Windows as your platform to download the **OpenVPN** launcher

6) Open the downloaded file by clicking on it

OPENVPN
Access Server

Institute for Advanced Study

OpenVPN Connect Recommended for your device:

NEW

OpenVPN Connect for all Platforms:

OpenVPN Connect v3:

NEW NEW

Available Connection Profiles:

[Yourself \(user-locked profile\)](#)

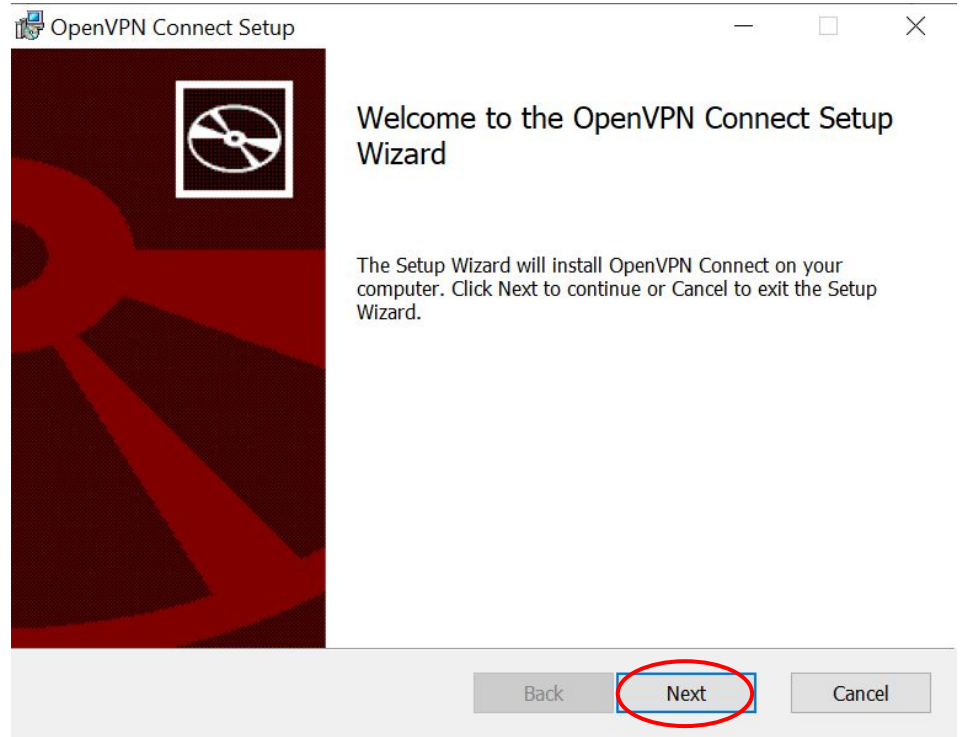
Logout

POWERED BY **OPENVPN** © 2009-2021 OpenVPN Inc. All Rights Reserved

openvpn-connect-....msi

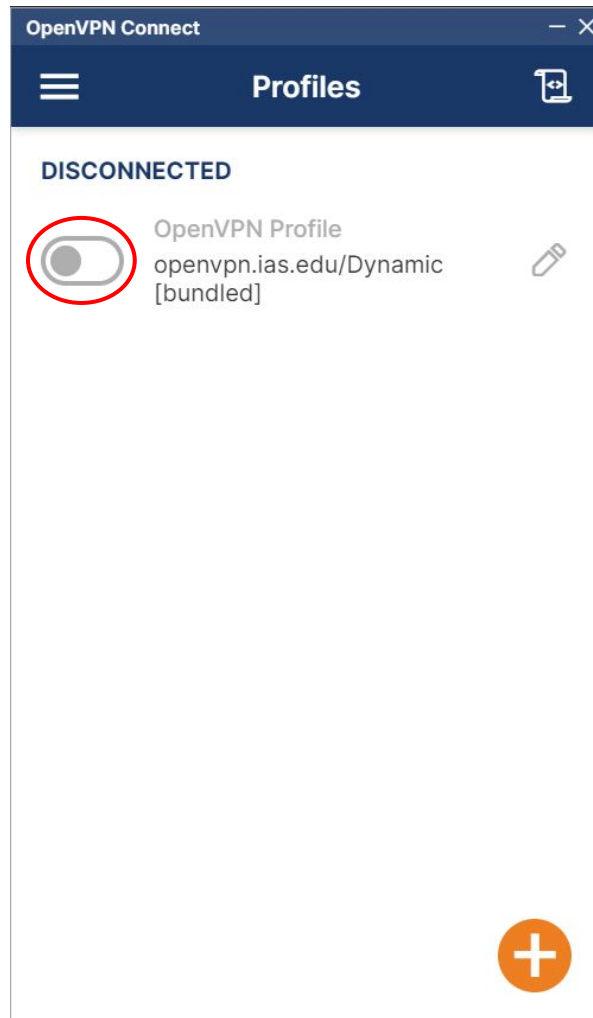
7) Wait for the **Setup Wizard** to open

8) Click **Next**, accept the **Terms and Conditions**, then select **Install**



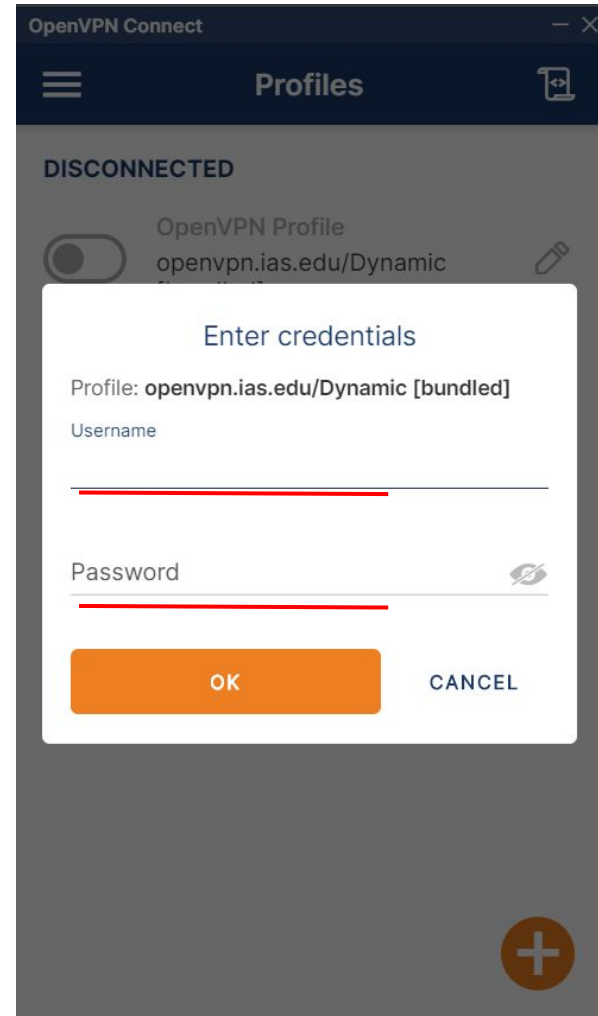
9) Click through the pop-ups and instructions on your screen

10) Click on the OpenVPN Profile bar to connect to the VPN



11) Enter your IAS credentials

12) Enter your Duo passkey following the same process as in steps 3 and 4



13) Congrats! You are now connected to the IAS
OpenVPN

The screenshot displays the OpenVPN Connect application window. At the top, the title bar reads "OpenVPN Connect" with standard window controls. Below the title bar is a dark blue header with a menu icon, the word "Profiles", and a refresh icon. The main content area is white and features a green "CONNECTED" status at the top. Below this, a green toggle switch is shown next to the text "OpenVPN Profile" and "openvpn.ias.edu/Dynamic [bundled]". A horizontal line separates this from the "CONNECTION STATS" section. The stats section shows a current speed of "34.3KB/s" and a graph with a yellow and orange area chart showing data fluctuations. Below the graph, the speed is shown as "0B/s". At the bottom, there are two rows of statistics: "BYTES IN 4.18 KB/S" with a downward arrow, and "BYTES OUT 3.38 KB/S" with an upward arrow. Below these are "DURATION 00:00:29" and "PACKET RECEIVED 0 sec ago". At the very bottom, the word "YOU" is on the left and a large orange plus sign icon is on the right.

OpenVPN Connect

Profiles

CONNECTED

OpenVPN Profile
openvpn.ias.edu/Dynamic
[bundled]

CONNECTION STATS

34.3KB/s

0B/s

BYTES IN 4.18 KB/S ↓

↑ BYTES OUT 3.38 KB/S

DURATION 00:00:29

PACKET RECEIVED 0 sec ago

YOU

+