



**Friends
Executive
Committee
2011-12**

Carolyn P. Sanderson
Chair

John J. Kerr, Jr.
Vice Chair

Donald M. Black
Martin A. Chooljian
Victoria Corrodi
Brig Gebert
Tina Greenberg
Thomas B. Harvey
Cynthia Hillas
Lynn Johnston
Florence B. Kahn
Francesca Liechenstein
Deborah R. Lunder
Lewis Maltby
John F. McCarthy III
Michael Morandi
Elena Petronio
John H. Rassweiler
Vivian Shapiro
Louise Steffens
Luke Visconti
John C. Wellemeyer
Steve Zipperstein

Didier Fassin
Faculty Representative

Peter Goddard
ex-officio

Pamela R. Hughes
Friends Liaison

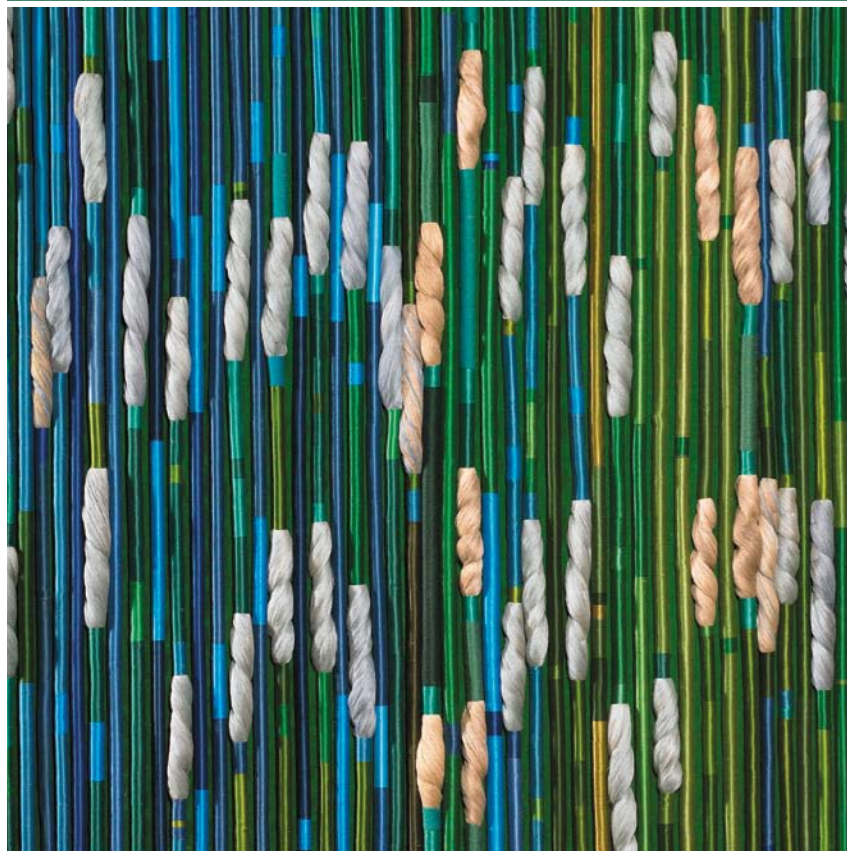
The Institute for Advanced Study, a private, independent academic institution founded in 1930 and located in Princeton, New Jersey, is dedicated to the disinterested pursuit of knowledge. Past Faculty have included Albert Einstein, who worked at the Institute from 1933 until his death in 1955, and distinguished scientists and scholars such as Kurt Gödel, J. Robert Oppenheimer, Erwin Panofsky, Homer A. Thompson, John von Neumann, George Kennan, and Hermann Weyl.

The work of the Institute's Faculty and Members has had permanent impact, in both intellectual and practical terms. At the beginning of computing, one of the first stored-program computers was designed and built on the Institute's campus. Its structure (von Neumann architecture) has influenced the development of today's computers and formed the mathematical basis for computer software.

The foundation of game theory, a powerful tool in economics, was formed in the School of Mathematics at the Institute, as was the basis of modern theoretical meteorology. Research in the School of Natural Sciences has greatly advanced particle physics, including string theory and astrophysics. Research in the School of Social Science has had wide-reaching impact on the field of global development. Books by Faculty in the School of Historical Studies have become key texts in a range of historical disciplines and, in particular, have made essential contributions to the establishment of art history as a discipline in the United States.



IAS
Friends of the Institute



Cover photo (upper) by Cliff Moore features a granite and steel sculpture by Elyn Zimmerman, which is located next to the Institute pond. Cover photo (lower) by Bruce M. White features a detail of *Green Silk Forest*, a tapestry by Sheila Hicks, which hangs in the IAS Dining Hall. Interior photos: Andrea Kane and Cliff Moore.

IAS
Institute for Advanced Study

Einstein Drive, Princeton, New Jersey 08540
friends@ias.edu 609.734.8204

Printed on 10% post consumer recycled paper, FSC and SFI certified, and made with green energy.



Join the Friends

Friends of the Institute for Advanced Study are partners in the advancement of research and scholarship at the highest level and, as such, are encouraged to participate in the intellectual and cultural life of the Institute. In accepting our invitation to become a Friend or renew your membership, you will have the opportunity to interact with Institute Faculty and Members, attend forums, lectures, concerts, and films, receive Institute publications, and have access to our libraries and Dining Hall.

Our more than 6,000 former Members hold positions of intellectual and scientific leadership throughout the academic world. Some twenty-six Nobel Laureates, and thirty-eight out of fifty-two Fields Medalists, as well as many winners of the Wolf and MacArthur prizes, have been affiliated with the Institute.

As a Friend, you participate in an exchange of immense value. Friends provide the Institute with significant discretionary income every year, supplying stipends for Members, matching funds necessary to secure grants from other sources, and contributing in many other estimable ways to the sustainability of our mission.

Become a Valued Partner

To become a Friend or to renew your annual membership requires a contribution of \$1,500 or more. Gifts accepted by the Institute may take the form of cash, securities, or tangible assets.

Friends who wish to become involved in a more substantial way with the intellectual work of the Institute may join the Founders' Circle, a level of participation that requires an annual gift of \$25,000 or more. Friends who engage with the Institute at this level may name a Membership in a School of their choice for one year and will have an opportunity to meet the Member whom they are sponsoring at a personalized special event hosted by the Director.

Other levels at which Friends may participate include the Chairman's Circle, with a yearly contribution of \$10,000 or more; the Director's Circle, with an annual gift of \$5,000 or more; and the 25th Anniversary Circle, with an annual gift of \$2,500 or more. Members of the Founders', Chairman's, and Director's Circles are invited to special events hosted by the Director and may use Marquand House, the Institute's guest house, for a private party. Founders' and Chairman's Circle members are also invited to join the Board of Trustees for a dinner with the Faculty in May.



Friends enjoy many opportunities to participate in the life of the Institute, with access to numerous lectures and other talks, concerts, films, social events, and use of the Institute's magnificent grounds and Woods. For further information about the Friends, contact Pamela Hughes at 609.734.8204 or phughes@ias.edu and visit our website, www.ias.edu.



As well as the privileges accorded to all Friends, donors at the Circle level are awarded a guest membership for a friend or colleague, who will be extended Friend privileges for one year.

Beyond the Circle levels of the Friends, membership in the Centennial Council is available to donors of \$100,000 or more per year. Lifetime membership is conferred on donors whose cumulative giving reaches \$1 million. Centennial Council membership extends the donor's relationship to the Institute through unique opportunities to engage with the Board of Trustees, the Director, and Faculty. Members are invited to two very special Centennial Council events each year. For more information on the Centennial Council, contact Susannah Coleman at 609.734.8031 or scoleman@ias.edu.